



**Cornerstone**  
*Montgomery*

# Corporate Partners Program

# About Cornerstone Montgomery



Since 1971, Cornerstone Montgomery has had the privilege to play a role in the journey of recovery for tens of thousands of people. We started small, meeting the basic needs of people coming out of state institutions by offering safe and supportive housing. For many of our clients, this was their first opportunity to live in the community, sometimes in decades. Over the years, and with the support of people like you, we have grown to include therapy and medication, employment services, crisis services and everything between.

Cornerstone Montgomery's Corporate Partners Program brings together people and businesses that share a commitment to empowering people living with mental health and co-occurring substance use disorders to live, work, and integrate successfully within the community.

During this time of crisis, Cornerstone Montgomery has continued to serve all our clients, and this is in large part due to the support we have received from our funders and sponsors. We are committed to ensuring our diverse client base receives the quality care that they deserve. Our role in removing health disparities and support of all individuals, also showcases our commitment to diversity and inclusion.

Corporate support helps make recovery possible, both in the lives of those who entrust us with our care, and the healing of our community throughout this period of unrest.. An investment in Cornerstone Montgomery is an investment in changing someone's life. By partnering with Cornerstone Montgomery, you are bringing hope to countless individuals and investing in the health of our community while building awareness for your business.



**W**ith this partnership  
we have moved  
into doing something  
that is noble.

**C**ornerstone  
Montgomery gives  
every client a chance to  
participate at whatever  
level we can.

**E**very client they send  
wants to work. How is  
that not good for business?

**I**f people I knew before could  
see me now, they wouldn't  
believe this was possible!

# Our Programs and Services

**Cornerstone Montgomery is the largest and most comprehensive mental health organization in Montgomery County. We are an independent, nonsectarian, nonprofit 501 (c)(3) organization with the capacity to serve over 2,400 adults and transition age youth who are living with severe mental illness and co-occurring mental illness and substance use issues. We manage 86 properties throughout Montgomery County.**



## **Integrated Treatment for Co-Occurring Disorders**

Our ITCOD program is an evidence based model that integrates mental health and substance use disorder treatments for individuals who are dually diagnosed.

All of our programs are considered Dual Diagnosis Enhanced or Capable.



## **Foundations Day Programs**

Our Foundations Day Programs provide daily living skills development through a variety of four and eight week seminars as well as individual training to build confidence and proficiency in all phases of daily life.



## **Residential Rehabilitation Program**

Our RRP Program provides comprehensive and individualized services at all levels of care for individuals who choose to live in a Cornerstone Montgomery operated residence. We operate 71 properties utilized for residential services, with a total capacity of 212.



### **Integrated Health**

Our Integrated Health Program is a part of National and State effort to improve the health of individuals with chronic health conditions. Supporting a broader effort to integrate somatic and behavioral health services in Maryland, the program targets populations with behavioral health needs who are at high risk for additional chronic conditions, including those with serious persistent mental health disorders and chronic health issues like diabetes, obesity, etc. Integrated Health offers participants enhanced care coordination services from providers with whom they regularly receive care. Cornerstone Montgomery provides services through its Psychiatric Rehabilitation Program and Integrated Health staff.



### **Residential Crisis Services**

Cornerstone Montgomery's Residential Crisis Services are community based, alternatives to inpatient hospitalization for people in acute psychiatric crisis. 24 hour counseling and crisis stabilization residence located in suburban single-family neighborhoods, these programs provide short-term interventions on referral. The programs seek to reduce unnecessary admissions to inpatient mental health facilities. Fenton-McAuliffe Homes are 8-bed voluntary, community based, alternative to inpatient hospitalization programs for people experiencing an acute psychiatric crises.



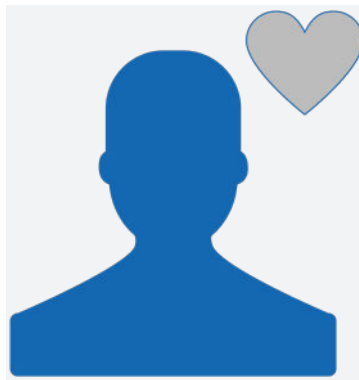
### **Case Management and Housing Facilitation**

Cornerstone Montgomery provides management and housing related services and supports for individuals not otherwise eligible in the public mental health system. Through our Montgomery County Case Management Program, staff provide linkages to community based services and resources, crisis intervention services, and facilitate client relationships with individuals and organizations in the community which the client finds supportive. The services may not be mental health related but are intended to support the individual's ability to function as independently as possible in the community.



### **Outpatient Mental Health Clinics**

Cornerstone Montgomery's OMHC provides a full range of mental health, psychiatric and therapeutic treatment services. OMHC serves clients of the Cornerstone Montgomery Psychiatric Rehabilitation Program, as well as members of the community. Cornerstone Montgomery operates three outpatient mental health clinics in Bethesda, Silver Spring, and Rockville, with a service capacity of over 1,650 individuals annually.



### **Assertive Community Treatment**

ACT is an evidence-based practice that improves outcomes for people with severe mental illness who are most vulnerable to homelessness and hospitalization. ACT utilizes a multi-disciplinary team approach, providing services directly in the community, maintaining a small staff to consumer ratio, and working with consumers for as long as they need. ACT works with consumers on medication management, physical health needs, housing, and employment goals.



### **Vocational Services**

**Back to Work Program** is an Evidence Based Supported Employment program that helps people recovering from mental illness choose, find and keep employment. This program serves almost 500 individuals per year, and has an employment rate of nearly 68% compared to the national average of 19%.

**Career Transition Program** serves individuals ages 16 and above and who are in the process of completing high-school.

**Career Academic and Psych-Rehab Services** program serves youth ages 18—25 who have completed high-school and are transitioning into the adult mental health/social service system. We will soon provide Youth In Transition Residential services, serving 12 young adults between the ages of 18 and 25.





### **Studio In-Sight**

Studio In-Sight supports up to 50 artists learning to become working artists or currently achieving their goal of financial stability through their work as artists. Whether working as an artist, providing administrative support, participating in shows or managing shows in a professional gallery space, clients are earning income and developing professional skills and networks. There are currently six classes per week at three locations (Rockville, Bethesda and Silver Spring) and approximately six public art shows each year held throughout the County and Maryland. The program provides art supplies, framing, and hanging of art at various galleries and shows. Art sales are shared with the client with a small margin going to the program for ongoing support and supplies.



### **Mental Health First Aid & Community Training**

We offer Mental Health First Aid and training in a variety of behavioral health topics to our community. Our trainings are available in-person or via webinars. We are nationally approved to offer Continuing Education Units to Social Workers and Professional Counselors.



### **Community Support**

Providing comprehensive and individualized supports for individuals living in their own home, or living in housing provided by other nonprofit organizations in the community. This program serves nearly 300 individuals throughout all regions of Montgomery County.



# Program Outcomes

---

## VOCATIONAL



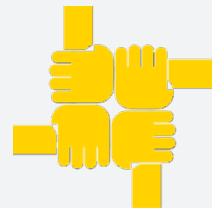
**186 NEW JOB  
PLACEMENTS**

## COMMUNITY SUPPORT



**219 PEOPLE SERVED**

## RESIDENTIAL CRISIS SERVICES



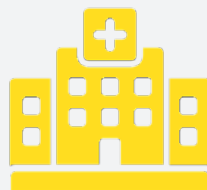
**85% OF PARTICIPANTS  
SUCCESSFULLY  
ACHIEVED GOALS**

## RESIDENTIAL REHABILITATION



**18 PEOPLE  
MOVED TO MORE  
INDEPENDENCE**

## OUTPATIENT CLINICS



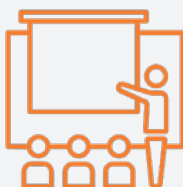
**94% REMAINED OUT  
OF THE HOSPITAL**

## ASSERTIVE COMMUNITY TREATMENT



**86% OF PEOPLE  
SERVED REMAINED  
IN THE COMMUNITY**

## OUTPATIENT CLINICS



**77% INVOLVED  
IN OTHER DAILY  
ACTIVITIES**

## RESIDENTIAL CRISIS SERVICES



**122 COMMUNITY  
MEMBERS SERVED**

## RESIDENTIAL REHABILITATION



**244 PEOPLE  
SERVED**



# Special Events

---



## CHAMPIONS & LEGACIES BREAKFAST

The annual Champions and Legacies Celebration Breakfast honors a community leader or group for dedication to supporting those living with mental health disorders with the Legacy Award. Employer, Partner and Volunteer of the Year Awards are presented to employers and individuals that have gone above and beyond to offer a supportive environment where people of different abilities can thrive. Proceeds from the Breakfast support the Cornerstone Montgomery Vocational Program, which helps more than 700 adults and transition age youth who are recovering from mental health disorders to choose, find and keep employment.



## THANKSGIVING DINNER

The annual Thanksgiving Dinner, held the Friday before Thanksgiving at St. Mark Presbyterian Church in Rockville, is a calendar highlight for our residential clients.

Approximately 150 clients attend to share a traditional holiday meal prepared and served by our staff, board members and dedicated volunteers.

Staff and clients provide entertainment in the form of song, dance and poetry.



## HOLIDAY GIFT DRIVE

The warmth of the holiday season is best shared with others. Each year, Cornerstone Montgomery's residential clients create a wish list of personal items that they would be grateful to receive at holiday time.

The wishlist is fulfilled through our generous donors and volunteers wrap and deliver gifts.

The drive provides a wrapped gift valued at \$30 for each of our 212 residential clients.



## Southport HUB Renovation

Having recently renovated two other HUB locations in Rockville and Silver Spring to expand access to services with improved treatment space and become trauma informed, Cornerstone Montgomery will now renovate its Southport HUB.

The Hub, located at 6040 Southport Drive, Bethesda was designed in 1992 to help people with serious mental illness transition out of State hospitals into the community. While no significant upgrades have been made to the facility since it opened, the agency has grown significantly to include a large continuum of services for adults with mental illness and co-occurring substance use disorders. As a result, the space no longer meets clients' needs or adequately supports current programs. The renovation will achieve greater functionality and cost efficiencies through:

1. Upgraded structures and facilities
2. Trauma-informed client treatment and meeting spaces
3. Accessible restrooms and elevator; and
4. New flooring to prevent falls

Cornerstone Montgomery will renovate the Southport Hub which is a central location to nearly 600 clients each year offering Day Programs, Cooking, Employment Services, Outpatient Behavioral Health Care and Art Studio space, time and classes. Three attached residential cottages provide 24/7 services to some of the agency's clients who require additional support and have coupling physical disabilities. Naming opportunities available.

# Innovations and Collaborations

---

Partnering with Cornerstone Montgomery makes good business sense. Current innovations and collaborations include:

1. Partnerships with approximately 300 businesses for Cornerstone Montgomery's Vocational Program
2. Collaborations:
  - Montgomery County Collaboration Council
  - Montgomery County Office of Human Resources
  - Nexus Montgomery
  - Maryland Department of Labor and Licensing Regulation
  - Montgomery County Coalition for the Homeless
  - Jewish Social Service Agency
  - Montgomery County Public Schools for youth Career Transition Program
  - Montgomery College for Transition Aged Youth linkages to disability services
  - NAMI, ActiveMinds and other mental health partner organizations
  - Area Chambers of Commerce, Rotary Clubs, Leadership Montgomery and other community /civic groups
3. Maryland Legal Aid services offered at the Rockville, Southport and Bethesda hubs weekly
4. Mental Health First Aid Training
5. Telemedicine
6. Co-location of a full suite of behavioral health programs and services in Rockville with Montgomery County's 70- bed emergency Women's shelter managed by Interfaith Works and CCI Health & Wellness Services for a one-of-a kind partnership providing services in an accessible, safe setting for vulnerable Montgomery County residents.

# Recognition and Engagement Opportunities

Corporate Partners Program members receive customized opportunities including Champions and Legacies Celebration Breakfast sponsorship and other special recognition while helping people with mental health and co-occurring substance use disorders regain their independence to achieve a meaningful life of their choosing.

OPPORTUNITY	LEGACY (\$10,000+)	CHAMPION (\$7,500)	BENEFACTOR (\$5,000)	PARTNER (\$2,500)	PATRON (\$1,000)	FRIEND (\$500)
Premium Seating	20	10	8	6	4	2
E-Journal Ad	Full Screen	Full Screen	Full Screen	Full Screen	Full Screen	Half Screen
VIP Event Invitations	X	X	X	X	X	X
Gratitude Report	X	X	X	X	X	X
Website Honor Roll	X	X	X	X	X	X
Logo on Event Materials	X	X	X	X	X	
Logo on Social Media	X	X	X	X		
Logo on Traveling Poster	X	X	X	X		
Printed Keepsake Book	X	X	X	X		
Volunteer Opportunities	X	X	X			
E-Journal Hyperlink	X	X				
Tour/Visit with CEO	X					

Become a Cornerstone Montgomery Corporate Partner Today!

Select your sponsorship:

☐ Legacy \$10,000    
 ☐ Champion \$7,500    
 ☐ Benefactor \$5,000  
☐ Patron \$1,000    
 ☐ Friend \$500    
 ☐ Other \$\_\_\_\_\_

Primary Contact Person: \_\_\_\_\_

Company Address: \_\_\_\_\_

City/State/Zip: \_\_\_\_\_

Email Address: \_\_\_\_\_

Phone: \_\_\_\_\_ Fax: \_\_\_\_\_

Website URL: \_\_\_\_\_

Method of Payment (Federal Tax ID 52-0937199)

☐ Check (payable to Cornerstone Montgomery)

☐ Credit Card (Visa, MC, Americal Express)

Name (as it appears on card): \_\_\_\_\_

Card Number: \_\_\_\_\_

Expiration Date: \_\_\_\_\_ Security Code: \_\_\_\_\_

Signature: \_\_\_\_\_

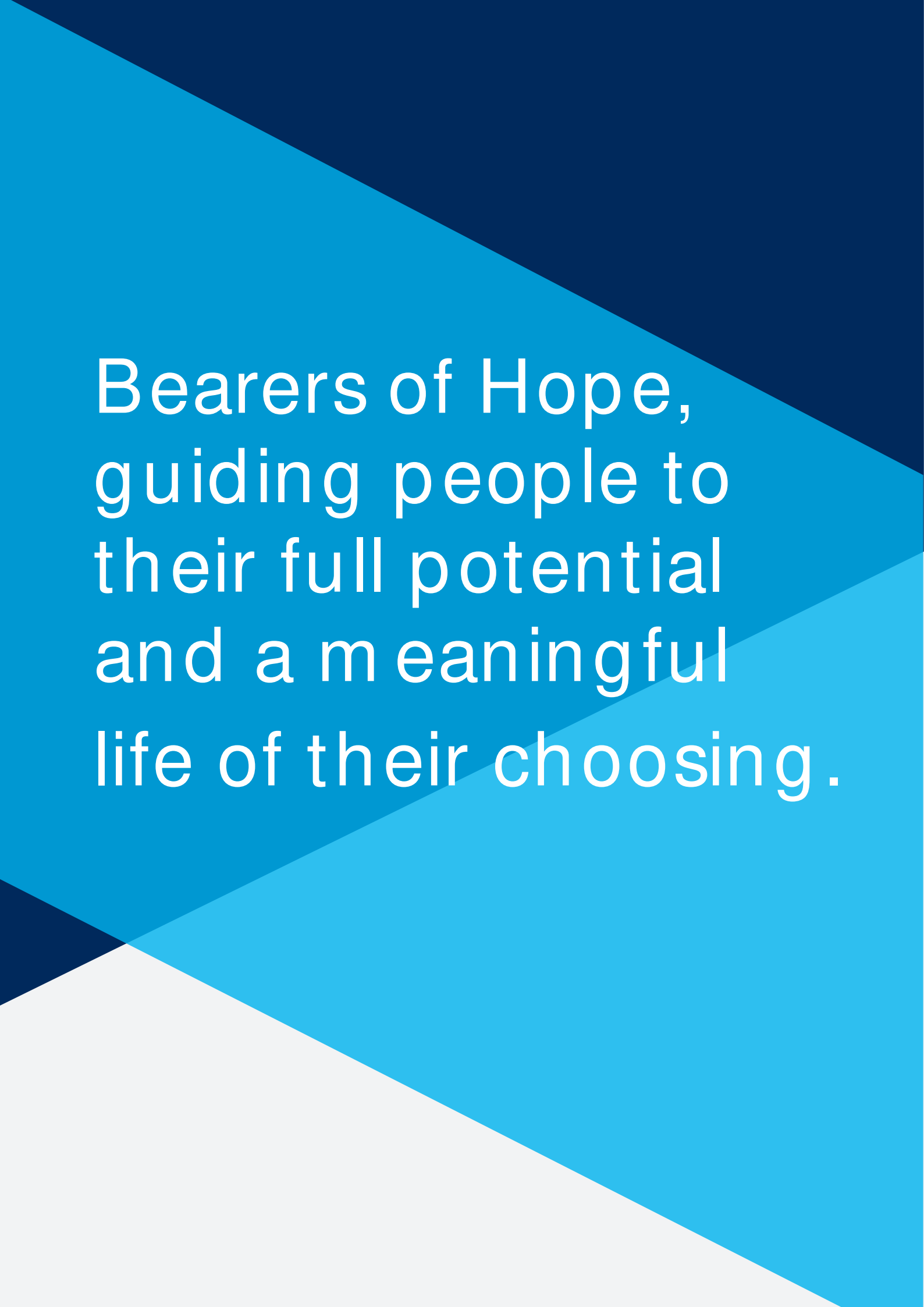
Return completed form to:

Development Department  
 Cornerstone Montgomery  
 2 Taft Court, Suite 200  
 Rockville, MD 20850

For more information contact:

Development Department  
 240-614-4266  
 Development@CornerstoneMontgomery.org

Cornerstone Montgomery is a registered charity in Maryland and we comply with regulations governing charities in this state. EIN 52-0937199.



Bearers of Hope,  
guiding people to  
their full potential  
and a meaningful  
life of their choosing.